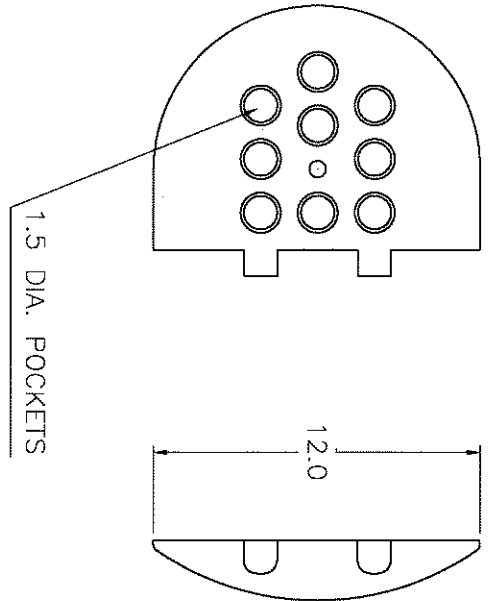
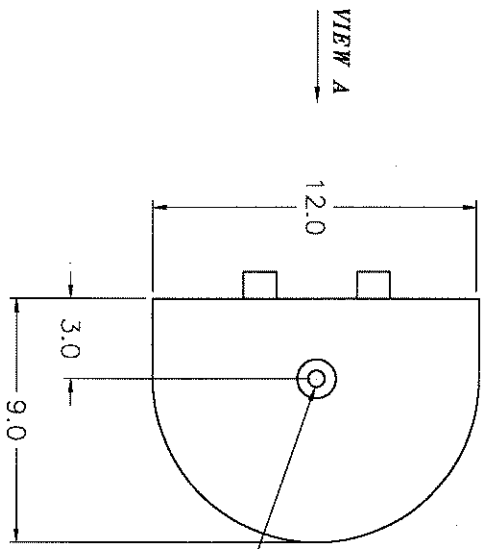


BOTTOM VIEW



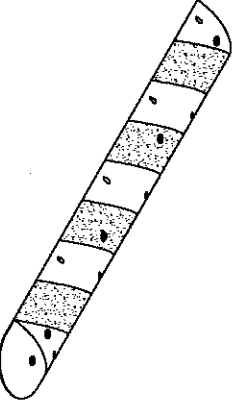
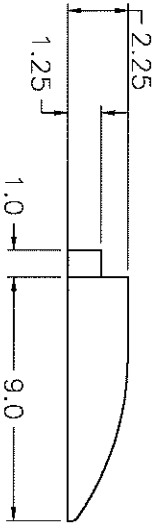
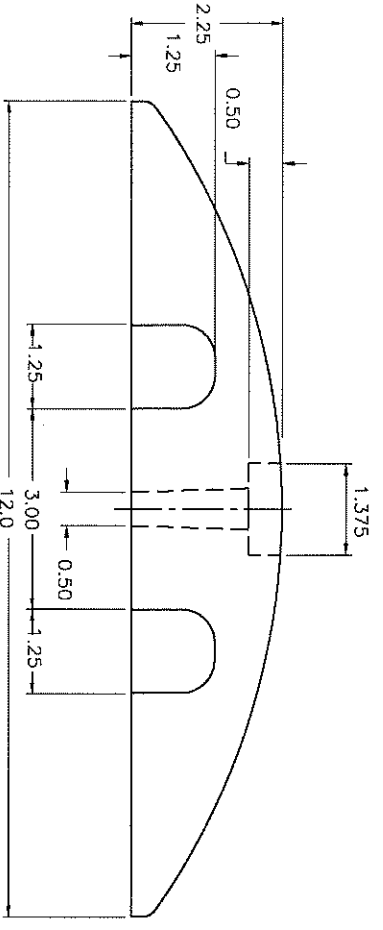
1.5 DIA. POCKETS

BOTTOM VIEW



MOUNTING HOLE 1/2" DIA.  
RECESSED FROM THE TOP  
1-3/8" DIA., 1/2" DEEP

VIEW A



**PRODUCT SPECIFICATIONS:**

1. MATERIAL: COMPRESSION MOLDED RECYCLED RUBBER COMPOSITE
2. DIMENSIONS: 9" L x 12" W x 2.25" H
3. ONE MOUNTING HOLE 1/2" DIA. (RECESSED 1-3/8" DIA. AND 1/2" DEEP, TO ACCOMMODATE A WASHER OR SPIKE'S HEAD) ARE PROVIDED FOR INSTALLATION WITH SPIKES OR HILTI ANCHORS
4. COLOR: BLACK
5. WEIGHT OF THE PRODUCT: 6.5 lbs.

REVISIONS

REV.	DESCRIPTION	DATE	APPROVED

**GNR TECHNOLOGIES INC.**

END CAP

FOR THE RUBBER SPEED BUMPS 2.25" THICK

DESIGN	S. JONASZ	DATE	MAR.13/99	MATERIAL		SHEET		SIZE	C
CHECKED	S. JONASZ	DATE	MAR.13/99	SCALE	1=4	DWG NO.	ECSB01-1		
DRAWN	S. JONASZ	DATE	MAR.13/99						

THIS DRAWING IS THE PROPERTY OF GNR TECHNOLOGIES INC. AND WILL NOT BE REPRODUCED, PUBLISHED, COPIED, OR OTHERWISE TRANSMITTED IN ANY FORM OR BY ANY MEANS WITHOUT WRITTEN PERMISSION FROM GNR TECHNOLOGIES INC.