

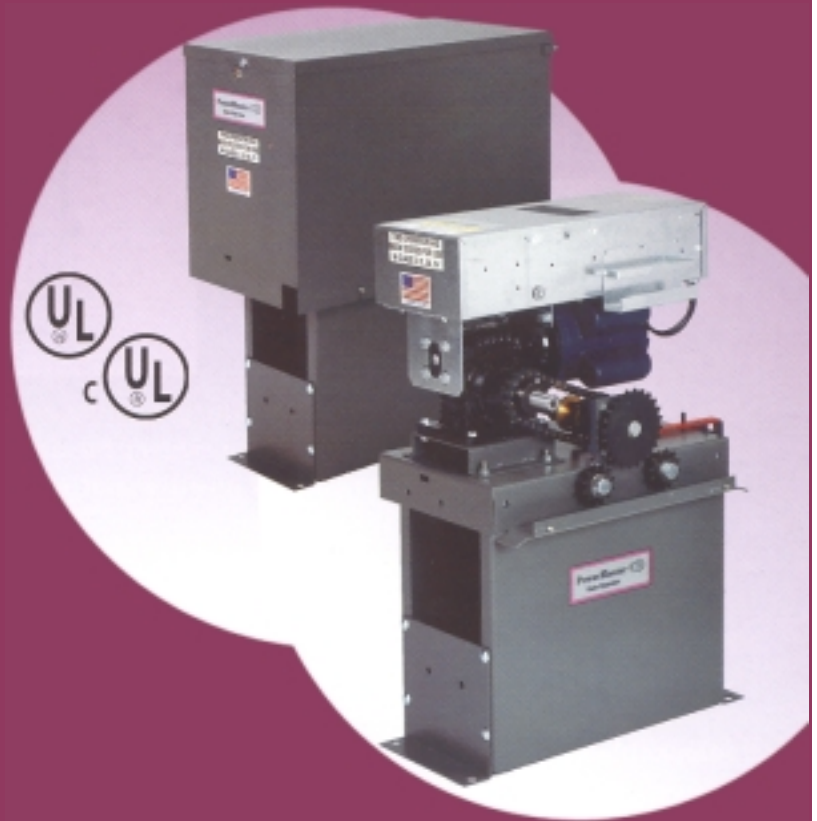
# Power Master



## Model SG 2000 SLIDE GATE OPERATOR

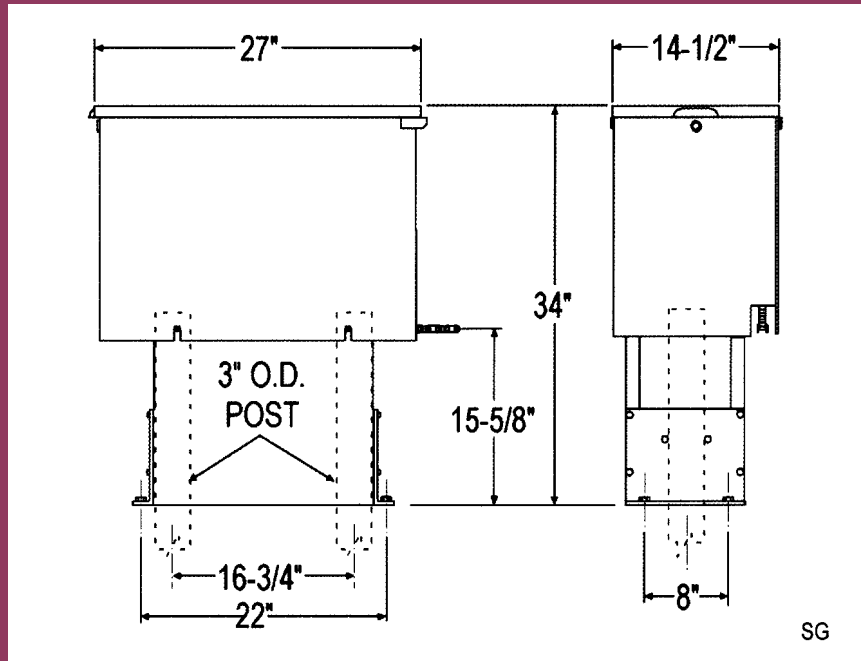
### ELECTRICAL FEATURES

- Solid state control board with diagnostic LEDs to indicate all input and output functions.
- External control, input terminal connections for:
  - Radio Receivers
  - Push Button Control Station
  - Key Switches
  - Loop Detectors
  - Card Key Readers
  - Telephone Entry Systems, etc.
- Timer to close with 0-60 sec. Adjustment standard. Longer timer available upon request.
- Maximum run timer for equipment protection (self adjusting)
- Master/Slave option with dedicated terminal connection provided.
- Easy Left/Right changeover.
- Time delay on reverse to ensure smooth gate motion and less stress on equipment.
- Emergency control enabling circuitry for safety with security.
- Spike suppressing circuitry for surge and lightning protection.
- Electrical dynamic brake for precise gate positioning.
- Magnetic gate lock control circuitry with 115 Volts output terminals.
- Integral current sensing, anti-entrapment circuitry with independent opening and closing sensitivity adjustments.
- External anti-entrapment circuitry with separate terminal connections for easy installation of contact and non-contact sensors.
- 1/2 HP, 115 Volts AC, 6 Amp., 1 phase, instant reversing, switchless, PSC motor, with thermal overload protection and high speed ball bearing for smooth, quiet operation.
- Internal ON/OFF power switch.
- Two grounded 115 Volts AC, 15 Amp. Convenience receptacles.
- NEMA 1 three-button control station included.



## TECHNICAL SPECIFICATIONS

- Power requirements: 115 Volts, 1 Phase
- Class 2 low voltage control circuit
- Available horse power: 1/2 HP
- Maximum gate weight: 1500 lb
- Maximum cycles per hour: 30 CPH
- Maximum gate width: 50 feet
- Gate speed: 11 inches per second.
- U/L 325 listed for use in Class I through IV applications.
- Shipping weight: approx. 235 lb



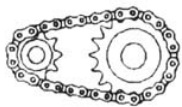
## MECHANICAL FEATURES

- Heavy duty #11 Ga. Galvanized steel frame providing a strong and durable unit.
- #16 Gauge galvanized steel, lockable exterior cover for drip proof water protection.
- Hard shell, baked-on weather resistant powder coating, with an attractive textured finish, for years of aesthetic protection from the elements.
- 40:1 oil bath type gear reducer for long service and smooth, quiet operation.
- Heavy duty #50 drive chain with a spring loaded tensioning system for smooth starts, stops and reversals.
- Heavy duty, pillow block type ball bearing supporting output drive shaft, and enabling extended endurance under heavy loads with low maintenance.
- Padlockable drive disconnect, with brass slide for manual operation In case of power failure.
- Positive, chain driven, rotary limit switches for precision gate positioning. Settings are never affected by manual operation.
- Post or pad mountable for easy installation.

## OPTIONAL EQUIPMENT

- Radio Control.
- Safety Edge (contact safety sensor)
- Photo Cell (non contact safety sensor).
- Loop Detector.
- Card Key Reader
- Magnetic Gate Lock
- Gear Box Heater (for cold climates)
- Thermostatically Controlled Cooling Fan (for hot climates)
- Interior and Exterior Control Stations:
  - Push Buttons
  - Push Buttons with Keyed Lockout
  - Key Switches
- Padlockable Option to secure cover for increased tamper proof protection.
- Three seconds Advance Audio Warning Signal, available upon request.

### Manufactured by:



John Greene Corporation  
3516 East Norvell Bryant Hwy.  
Hernando, FL 34442

### Distributed by:



AFW Access Systems  
3670 NW 79th Street  
Miami, FL 33147

