

Power Master



Model RSW 2000 SWING GATE OPERATOR

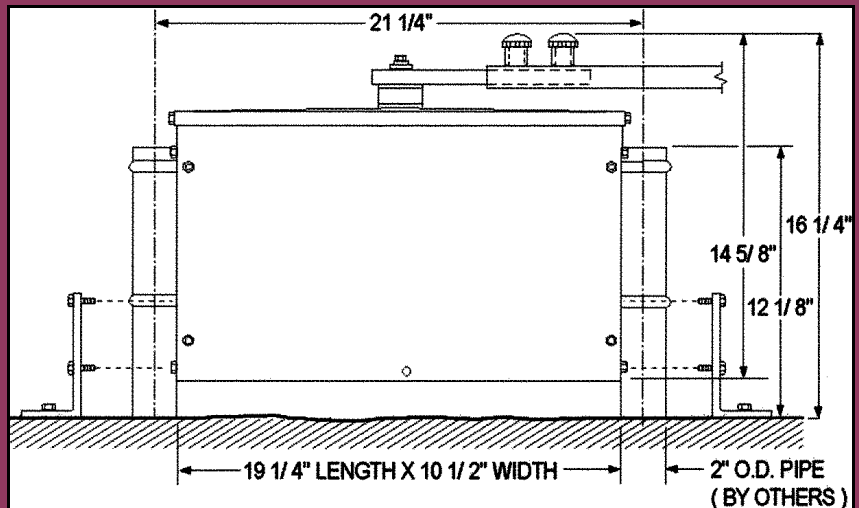
ELECTRICAL FEATURES

- Solid state P.C. board with Custom Programmed Micro Processor for state of the art control.
- External control, input terminal connections for:
 - Radio Receivers
 - Push Button Control Station
 - Key Switches
 - Loop Detectors
 - Card Key Readers
 - Telephone Entry Systems, etc.
- Timer to close with 0-60 sec. Adjustment standard. Longer timer available upon request.
- Maximum run timer for equipment protection (self adjusting).
- Master/Slave option with dedicated terminal connection provided.
- Easy Left/Right changeover.
- Time delay on reverse to ensure smooth gate motion and less stress on equipment.
- Spike suppressing circuitry for surge and lightning protection.
- Electrical dynamic brake for precise gate positioning.
- Integral current sensing, anti-entrapment circuitry with independent opening and closing sensitivity adjustments.
- External anti-entrapment circuitry with separate terminal connections for easy installation of contact and non contact sensors.
- ½ HP, 115 Volts AC, 5.5 Amp., 1 phase, instant reversing, switchless, PSC motor, with thermal overload protection for smooth, quiet operation.
- Internal ON/OFF power switch.
- NEMA 1 one-button control station included.



TECHNICAL SPECIFICATIONS

- Power requirements: 115 Volts, 1 Phase
- Class 2 low voltage control circuit
- Available horse power: ½ HP
- Maximum gate weight: 350 lb
- Maximum cycles per hour: 12 CPH
- Maximum gate width: 12 feet
- Gate speed: 10 seconds from open to close.
- U/L 325 listed for use in Class I through IV applications.
- Shipping weight: approx. 80 lb



MECHANICAL FEATURES

- Heavy duty #11 Ga. Galvanized steel frame providing a strong and durable unit.
- Hard shell, baked-on weather resistant powder coating, with an attractive textured finish, for years of aesthetic protection from the elements.
- Industrial V-belt primary reduction for smooth, quiet operation.
- #65 Sprocket and roller chain arrangement for final drive reduction.
- Oil impregnated brass bearings, supporting output drive shaft, for dependable service with low maintenance.
- Drive arm easily disconnected for manual operation in case of a power failure.
- Easy adjustable limit switch cams for precision gate positioning.
- Soft start and stop at open and close limits of travel, due to the inherent geometry of the articulating drive arm linkage.
- Post or par mountable for easy installation.

OPTIONAL EQUIPMENT

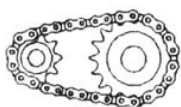
- Radio Control.
- Safety Edge (contact safety sensor)
- Photo Cell (non contact safety sensor).
- Loop Detector.
- Card Key Reader

Interior and Exterior Control Stations:

- Push Buttons
- Push Buttons with Keyed Lockout
- Key Switches

Three seconds Advance Audio Warning Signal, available upon request.

Manufactured by:



John Greene Corporation
3516 East Norvell Bryant Hwy.
Hernando, FL 34442

Distributed by:



AFW Access Systems
3670 NW 79th Street
Miami, FL 33147

