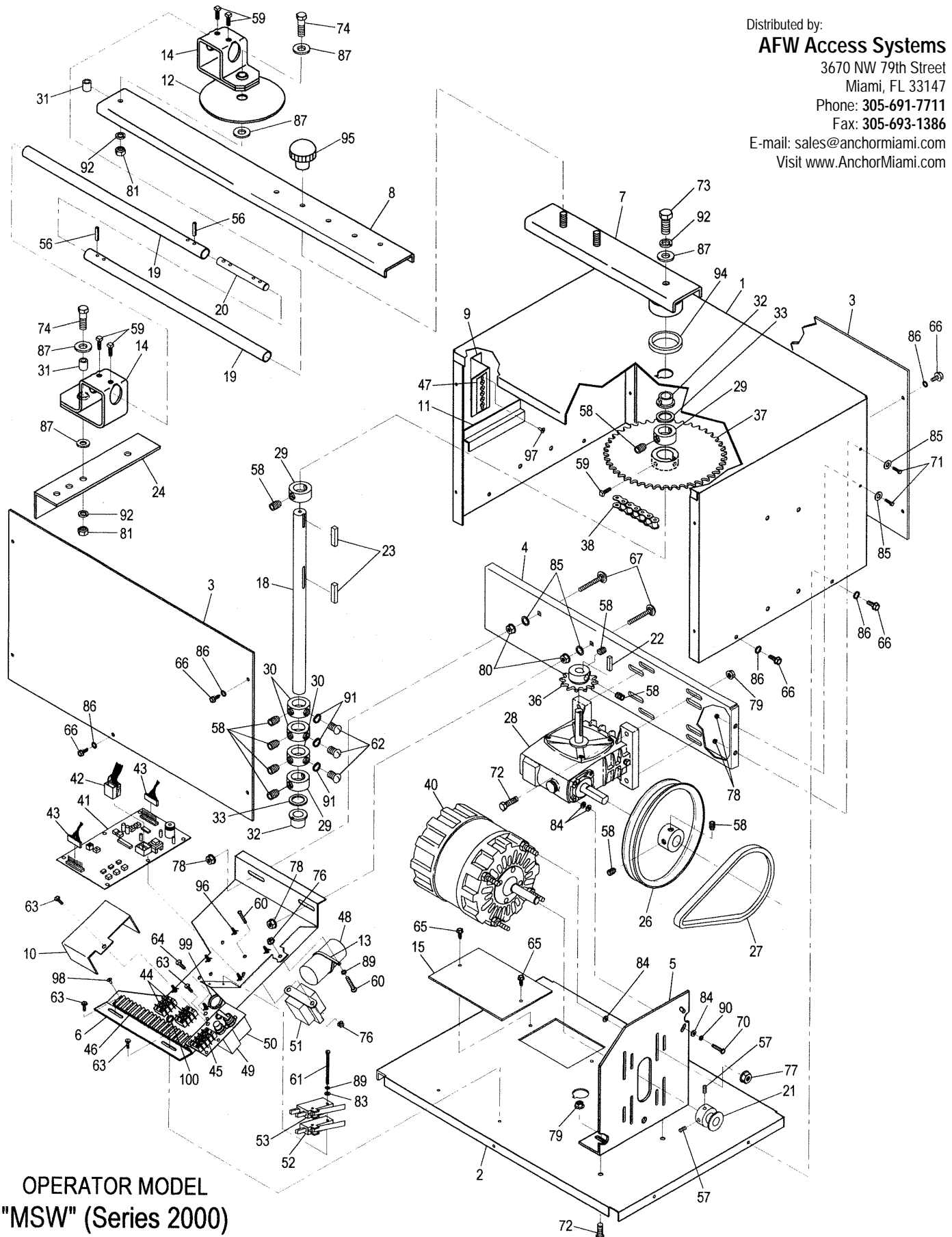


# Powermaster MSW 2000 Exploded View

Distributed by:  
**AFW Access Systems**  
3670 NW 79th Street  
Miami, FL 33147  
Phone: 305-691-7711  
Fax: 305-693-1386  
E-mail: [sales@anchormiami.com](mailto:sales@anchormiami.com)  
Visit [www.AnchorMiami.com](http://www.AnchorMiami.com)



OPERATOR MODEL  
"MSW" (Series 2000)

# MSW (Series 2000)

ITEM	QTY.	DESCRIPTION	PARTS #
1	One	Cover	701
2	One	Splash plate	706
3	Two	Front/rear cover	705
4	One	Reducer mounting plate	712
5	One	Motor mounting plate	713
6	One	Electric plate	729
7	One	Control arm weldment	707-2
8	One	Control arm extension	707-1
9	One	R/C terminal strip mounting bracket	727
10	One	Junction box cover	728
11	One	Radio receiver mounting bracket	730
12	One	Anti- pinch disc	733
13	One	Capacitor strap	1104
14	Two	Control rod fitting (pipe knuckle)	2212
15	One	Electrical access plate	CSWC-3104
16			
17			
18	One	Drive shaft	717
19	Two	Control rod	2221
20	One	Splice bar control rod	4012
21	One	Motor pulley	AS1550
22	One	3/16" Square key	SK316X1.25
23	Two	1/4" Square key	SK14X1.25
24	One	Gate bracket	T-107-3G
25			
26	One	Drive sheave	AS6012
27	One	V-Belt	4L240
28	One	Gear reducer	MSW-40
29	Three	1" Collar	SC-100-R
30	Three	1" Limit collar	SC-100-L
31	Two	3/8" Plain bearing	PBO-376262
32	Two	1" Flange bearing	FB-1000
33	Two	1" Shim	1X050
34			
35			
36	One	Sprocket	41B12X.62
37	One	Sprocket	41B45X1.0
38	One	Roller chain	RC41X53P
39			
40	One	Motor	PSC-50150
41	One	PC control board	GSMCB02
42	One	8 Pin wiring harness	8P-HARN
43	Two	10 Pin wiring harness	10P-HARN
44	Two	2 Position terminal strip	TS-02
45	One	4 Position terminal strip	TS-04

# MSW (Series 2000)

ITEM	QTY.	DESCRIPTION	PARTS #
46	One	14 Position terminal strip	TS-114
47	One	4 Position R/C terminal strip	R/C-TS-04
48	One	Capacitor	CAP-70220
49	One	1Ø Overload reset switch	MB-8AMP
50	One	ON/OFF power switch	2GK51-73
51	One	Transformer	TU1-2440VA
52	One	Single limit switch	LS-AT-#2
53	One	Double limit switch	LS-DAT-#6
54			
55			
56	Four	Roll pin 1/4" X 1"	R25X1000
57	Two	Socket set screw	1404SSC
58	Ten	Socket set screw	3105SSC
59	One	Square head set screw	SQ1420X.625
60	Three	Pan head machine screw	0610MSP
61	Two	Truss slotted machine screw	0636MST
62	Three	Round head machine screw	1406MSR
63	Four	Hex washer head, type B, sheet metal screw	0804BSW
64	One	Hex washer head machine screw (green)	1106MSW(G)
65	Two	Hex washer head, type B, sheet metal screw	1408BSW
66	14	Hex washer head, type B, sheet metal screw	3108BW
67	Two	Carriage bolt	1420C
68			
69			
70	Two	Hex head machine screw	1116MH
71	Four	Hex head bolt	1410BHT
72	Six	Hex head bolt	3116BHT
73	One	Hex head tap bolt	3716BHT
74	Two	Hex head tap bolt	3732BHT
75			
76	Three	Serrated flange hex nut	06NR
77	Four	Serrated flange hex nut	11NR
78	Six	Serrated flange hex nut	14NR
79	Six	Serrated flange hex nut	31NR
80	Two	Hex nut	14NF
81	Two	Hex nut	37NF
82			
83	Two	Flat washer	06WSAE
84	Ten	Flat washer	10WSAE
85	Six	Flat washer	14WSAE
86	14	Flat washer	31WSAE
87	One	Flat washer	37WSAE
88			
89	Three	Lock washer	06WS
90	Two	Lock washer	10WS

# MSW (Series 2000)

ITEM	QTY.	DESCRIPTION	PARTS #
91	Three	Lock washer	14WS
92	Three	Lock washer	37WS
93			
94	One	Control arm seal ring	SR-100
95	Two	Phenolic hand knob	HK-381
96	Six	Plastic stand off	PSO-14
97	Two	Rivet	1624-00411
98	Eight	Rivet	SD-46BS
99	One	7/8" Grommet	G-87
100	Four	3/8" Grommet	G-37

Distributed by:

**AFW Access Systems**

3670 NW 79th Street

Miami, FL 33147

Phone: 305-691-7711

Fax: 305-693-1386

E-mail: [sales@anchormiami.com](mailto:sales@anchormiami.com)

Visit [www.AnchorMiami.com](http://www.AnchorMiami.com)