

Powermaster MSW Explosion View

Distributed by:

AFW Access Systems

3670 NW 79th Street

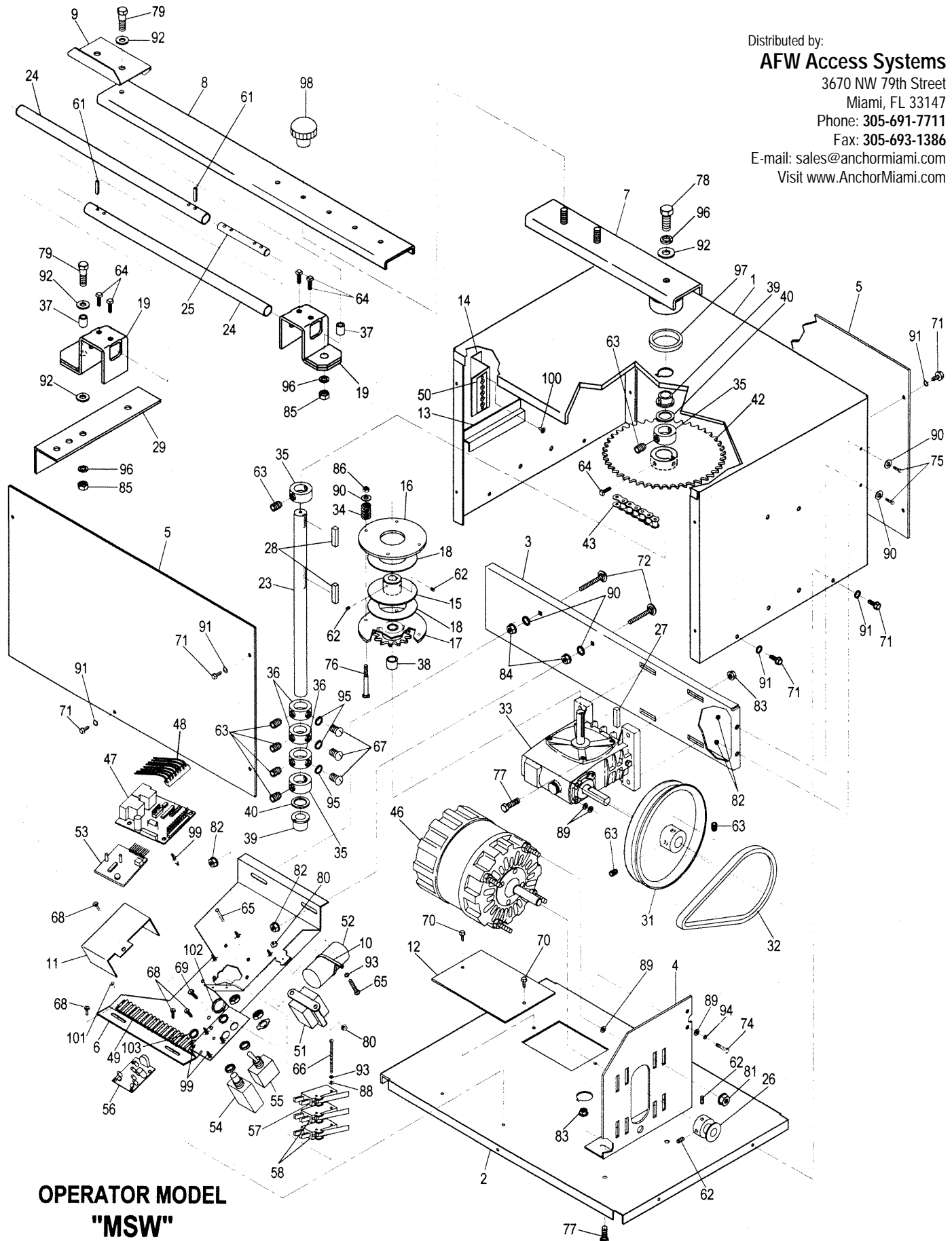
Miami, FL 33147

Phone: 305-691-7711

Fax: 305-693-1386

E-mail: sales@anchormiami.com

Visit www.AnchorMiami.com



**OPERATOR MODEL
"MSW"**

MSW

ITEM	QTY.	DESCRIPTION	PART #
1	One	Cover	701
2	One	Splash plate	706
3	One	Reducer mounting plate	712
4	One	Motor mounting plate	713
5	Two	Front cover/Rear cover	705
6	One	Electric plate	729
7	One	Control arm weldment	707-2
8	One	Control arm extension	707-1
9	One	Stop bracket	2207
10	One	Capacitor strap	1104
11	One	Junction box cover	728
12	One	Electrical access plate	CSWC3104
13	One	Radio receiver mounting bracket	730
14	One	R/C Terminal strip mounting bracket	727
15	One	Center plate weldment	723
16	One	Pressure plate	715
17	One	Cluster weldment	721
18	Two	Clutch disc	NA-4218
19	Two	Control rod fitting (Pipe Knuckle)	2212
20			
21			
22			
23	One	Drive Shaft	717
24	Two	Control Rod	2221
25	One	Splice bar-control rod	4012
26	One	Motor pulley	AS1550
27	One	3/16" Square key	SK316
28	Two	1/4" Square key	SK14
29	One	Gate bracket	T-107-3G
30			
31	One	Drive sheave	AS6012
32	One	V-Belt	4L230
33	One	Gear reducer	LIM-40-MSW
34	Four	Clutch spring	C-120
35	Three	1" Collar	SC-100-R
36	Three	1" Collar limit	SC-100-L
37	Two	3/8" Plain bearing	PB375
38	One	5/8" Plain bearing	PB625

MSW

ITEM	QTY.	DESCRIPTION	PART #
39	Two	1" Flange bearing	FB1000
40	Two	1" Shim	1X050
41			
42	One	Sprocket	41B4510
43	One	Roller chain	41X53P
44			
45			
46	One	Motor	PSC-50150
47	One	PC Control board	PRB
48	One	12 Pin wiring harness	12-P-HARN
49	One	14 Position terminal strip	TB-1141
50	One	4 Position R/C terminal strip	TS-04
51	One	Transformer	T120-24-10
52	One	Capacitor	CAP-70220
53	One	Fuse holder	FH-300-20
54	One	Fuse	F-250-6
55	One	ON/OFF Power switch	125V-20A
56	One	Current sensor board (optional)	5582CCS5
57	Three	Limit switch	LS-AT-DR
58	One	Timer (optional)	SF-10247
59			
60			
61	Four	Roll pin 1/4" x 1"	R250x1000
62	Four	Socket set screw	1404SSC
63	Eight	Socket set screw	3105SSC
64	Six	Square head set screw	SQ1420x.625
65	Four	Pan head machine screw	0610MSP
66	Two	Round head machine screw	0636MSR
67	Three	Round head machine screw	1406MSR
68	Four	Hex washer head, type B, sheet metal screw	0804BSW
69	One	Hex washer head, type B, sheet metal screw (green)	1008BSW(G)
70	Two	Hex washer head, type B, sheet metal screw	1408BSW
71	15	Hex washer head, type B sheet metal screw	3108BW
72	Two	Carriage bolt	1420C
73	One	Hex head machine screw	0616MH
74	Two	Hex head machine screw	1116MH
75	Four	Hex head bolt	1420BHT

MSW

ITEM	QTY.	DESCRIPTION	PART #
76	Four	Hex head bolt	1436BHT
77	Six	Hex head bolt	3116BHT
78	One	Hex head tap bolt	3716BHT
79	Two	Hex head tap bolt	3732BHT
80	Three	Serrated flange hex nut	06NR
81	Four	Serrated flange hex nut	11NR
82	Six	Serrated flange hex nut	14NR
83	Six	Serrated flange hex nut	31NR
84	Two	Hex nut	14NF
85	Two	Hex nut	37NF
86	Four	Elastic stop nut	14NS
87			
88	Two	Flat washer	06WSAE
89	Ten	Flat washer	10WSAE
90	12	Flat washer	14WSAE
91	15	Flat washer	31WSAE
92	Five	Flat washer	37WSAE
93	Three	Lock washer	06WS
94	Two	Lock washer	10WS
95	Three	Lock washer	14WS
96	Three	Lock washer	37WS
97	One	Control arm seal ring	SR-100
98	Two	Phenolic hand knob	HK-381
99	Eight	Stand off	PSO-14
100	Two	Rivet	1624-00411
101	Two	Rivet	SD-46BS
102	One	7/8" Grommet	G-87
103	Four	3/8" Grommet	G-37

Distributed by:

AFW Access Systems

3670 NW 79th Street

Miami, FL 33147

Phone: 305-691-7711

Fax: 305-693-1386

E-mail: sales@anchormiami.com

Visit www.AnchorMiami.com