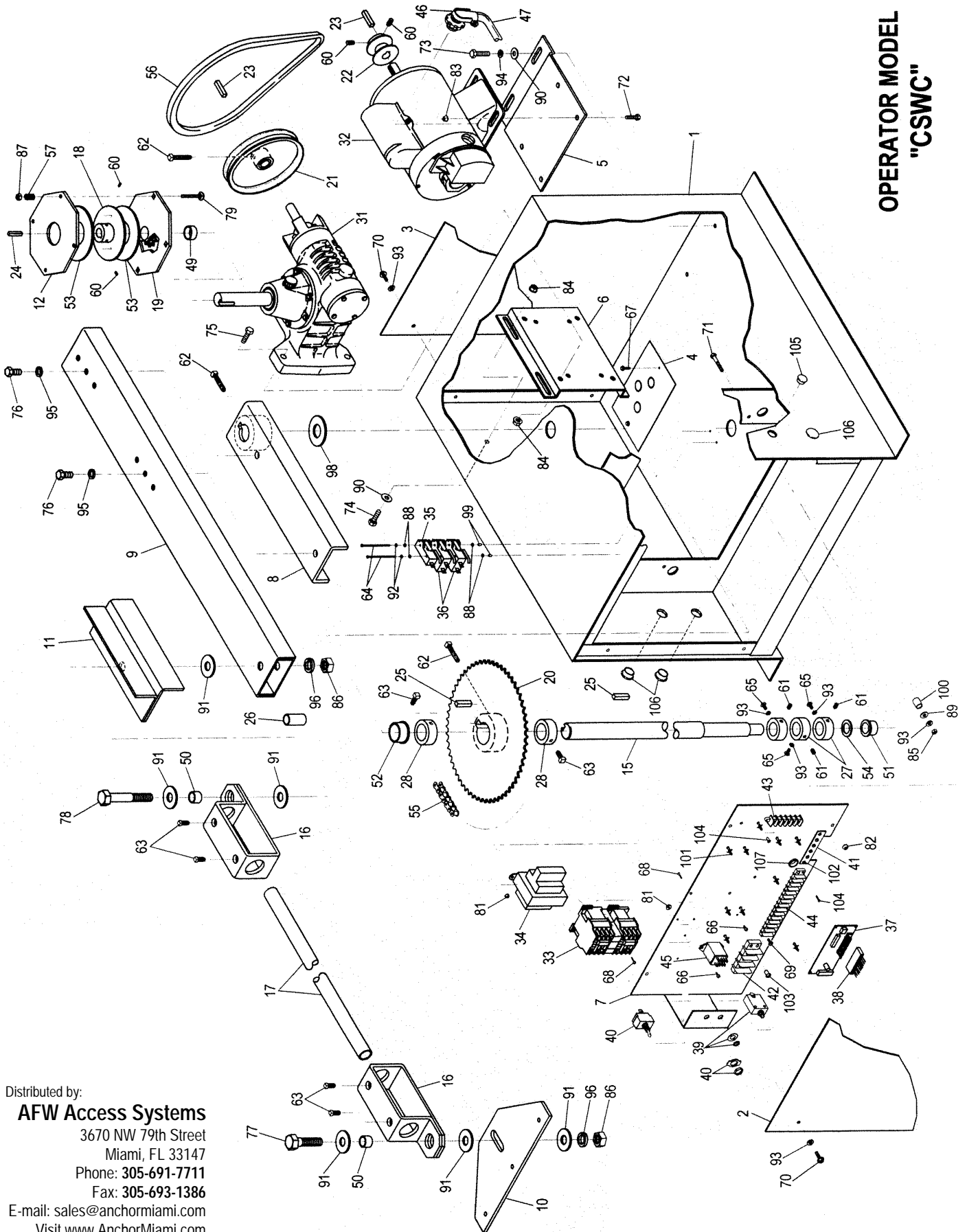


# Powermaster CSWC Explosion View

OPERATOR MODEL  
"CSWC"



Distributed by:  
**AFW Access Systems**  
 3670 NW 79th Street  
 Miami, FL 33147  
 Phone: 305-691-7711  
 Fax: 305-693-1386  
 E-mail: sales@anchormiami.com  
 Visit www.AnchorMiami.com

# CSWC

ITEM	QTY.	DESCRIPTION	PART #
1	One	Housing weldment	3101
2	One	Front cover plate	3102
3	One	Rear cover plate	3103
4	One	Electrical access plate	3104
5	One	Motor mounting bracket	3105
6	One	Reducer mounting bracket	2312
7	One	Electric plate	3802
8	One	Control arm weldment	CSW-1007
9	One	Control arm extension	CSW-1008
10	One	Gate bracket	CSW-1010
11	One	Control arm stop bracket	CSW-1041
12	One	Pressure plate	CSW-1030
13			
14			
15	One	Output shaft	3106
16	Two	Pipe knuckle	CSW-1013
17	One	Control rod	CSW-1036
18	One	Drive plate weldment	CSW-1029
19	One	Cluster weldment	CSW-1035
20	One	Output shaft sprocket	40B60150
21	One	Reducer pulley	AS7558
22	One	Motor pulley	AS2062
23	Two	3/16" Square key	SK316X1.375
24	One	1/4" Square key	SK14X1.375
25	Two	3/8" Square key	SK375x1.125
26	One	Control arm extension spacer	3113
27	Three	1-1/4" Limit collar	SC-125-L
28	Two	1-1/2" Collar	SC-150-R
29			
30			
31	One	Gear reducer	CSW-55
32	One	Motor	AS REQ'D
33	One	Contractor	LC2D0910
34	One	1 $\emptyset$ Transformer	T1-2-2460V
		or 3 $\emptyset$ Transformer	T4-2460V
35	One	Single limit	LS-AT#3
36	Two	Double limit switch	LS-DAT#5
37	One	PC Control board	TPU
38	One	12 Pin wiring harness	12P-HARN
39	One	1 $\emptyset$ Overload reset switch	MB-AS REQ'D
		or 3 $\emptyset$ Overload reset switch	LR2-AS REQ'D
40	One	On/off witch	2GK51-73
41	One	4 Position R/C terminal strip	TS-04
42	One	3 Position terminal block	TB-03
43	One	6 Position terminal strip	TB-06

# CSWC

ITEM	QTY.	DESCRIPTION	PART #
44	One	14 Position terminal strip	TB-114
45	One	120 VAC Relay for 1Ø 110V	R120A-IRDPDT
		or 240 VAC Relay for 1Ø 220V (as req'd)	R240A-IRDPDT
46	One	3/8" 90° Connector	801-DC2
47	One	Insulation tubing	PVI-024
48			
49	One	1" Plain bearing	PB1002
50	Two	3/4" Plain bearing	PB0-751062
51	One	1" Flange bearing	FB-1012575
52	One	1-1/2" Flange bearing	FB-1517575
53	Two	Clutch disk (fiber)	CSW-1034
54	One	1" Shim	1X0.05
55	One	Drive chain	RC40X69
56	One	V-belt	4LX320
57	Four	Spring	C-120
58			
59			
60	Four	Socket set screw	3105SSC
61	Three	Socket set screw	3706SSC
62	Five	Square head set screw	SQS51618X1
63	Six	Square head set screw	SQS3816X62
64	Two	Pan head machine screw	0640MSP
65	Three	Round head machine screw	1406MSR
66	Three	Hex washer head, type B, sheet metal screw	0804BSW
67	Two	Hex washer head, type B, sheet metal screw	1408BW
68	Four	Hex washer head machine screw	0808MSW
69	One	Hex washer head machine screw (green)	1106MSW
70	Eight	Hex head tap bolt	1410BHT
71	Four	Hex head cap bolt	1424CH2
72	Four	Hex head tap bolt	3114BHT
73	Two	Hex head tap bolt	3712BHT
74	Four	Hex head tap bolt	3716BHT
75	Four	Hex head tap bolt	3720BHT
76	Two	Hex head tap bolt	5012BHT
77	One	Hex head cap bolt	7540CH2
78	One	Hex head cap bolt	7564CH2
79	Four	Carriage bolt	3736C
80			
81	Four	Serrated flange hex nut	08NR
82	Four	Serrated flange hex nut	14NR
83	Four	Serrated flange hex nut	31NR
84	Eight	Serrated flange hex nut	37NR
85	Four	Hex nut	14NF
86	Two	Hex nut	75NF
87	Four	Hex jam nut	37NJ

# CSWC

ITEM	QTY.	DESCRIPTION	PART #
88	Four	Flat washer	06WSAE
89	Four	Flat washer	31WSAE
90	Six	Flat washer	37WSAE
91	Six	Flat washer	75WSAE
92	Two	Lock washer	06WS
93	15	Lock washer	14WS
94	Two	Lock washer	37WS
95	Two	Lock washer	50WS
96	Two	Lock washer	75WS
97			
98	One	Control arm seal ring	SR-100
99	Two	1/4" Limit switch spacer	60195
100	Four	Electric plate mounting spacer	60998
101	Nine	Stand off	PS0-14
102	Two	Rivet	1624-0041
103	Two	Rivet	BF01-0630
104	Four	Rivet	SD-46BS
105	One	1/2" K.O. seal	KOS-50
106	Three	7/8" K.O. seal	KOS-87
107	One	7/8" Grommet	G-87

Distributed by:

**AFW Access Systems**

3670 NW 79th Street

Miami, FL 33147

Phone: 305-691-7711

Fax: 305-693-1386

E-mail: [sales@anchormiami.com](mailto:sales@anchormiami.com)

Visit [www.AnchorMiami.com](http://www.AnchorMiami.com)